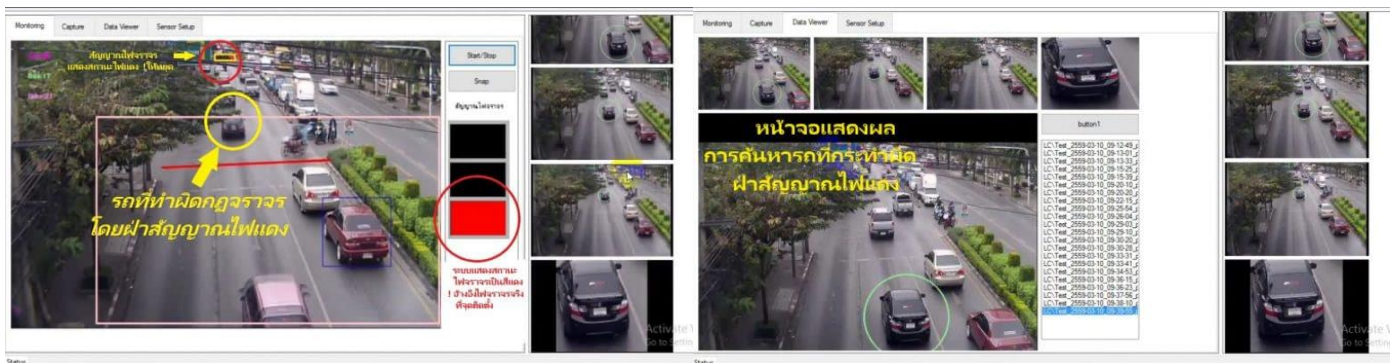
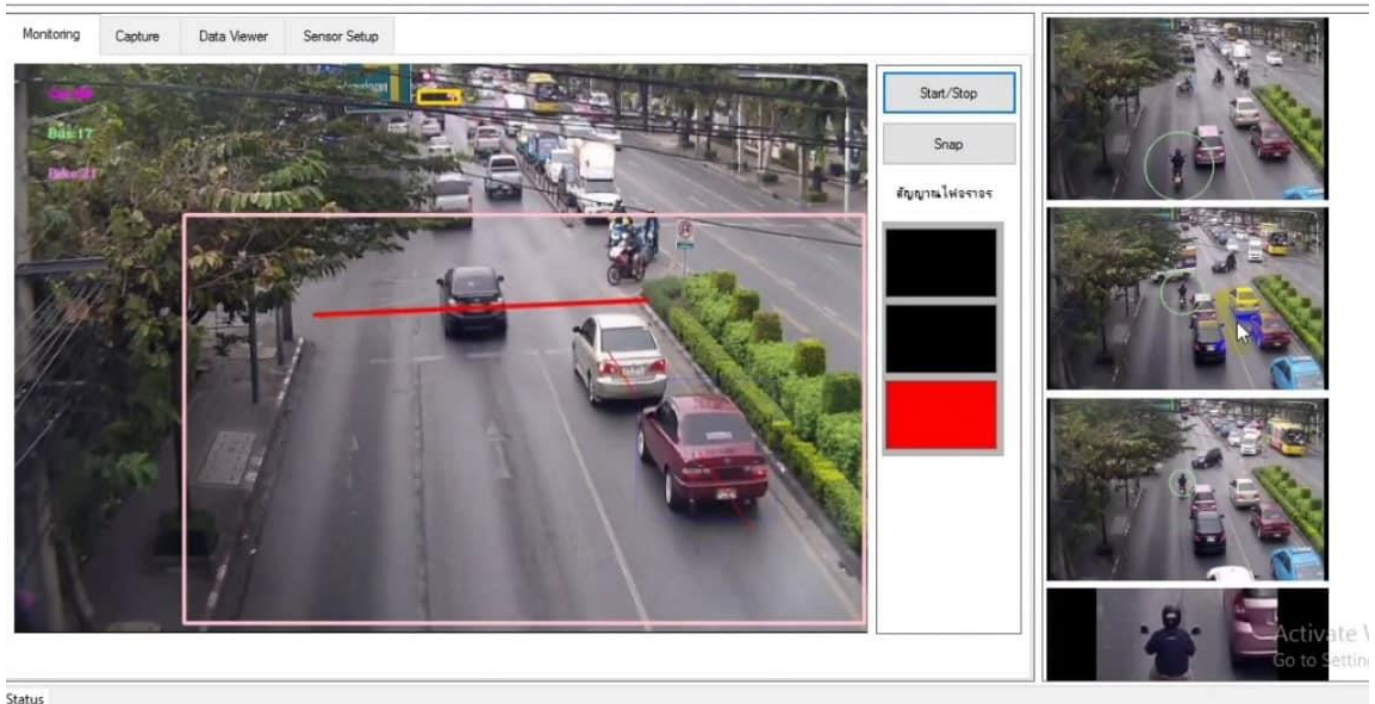


# TT SMART VISION

## Red Light Enforcement



TT SMART VISION CO., LTD.



Red light detection system is a system that monitors the traffic violation. The system will detect the car from entering the detection area, then system will keep tracking vehicle to check the status of traffic lights, then detect the vehicle over the detection line. The system required high resolution IP Camera, which determines the conditions of the traffic violation. When a car enters into a violation condition. The car will be recorded in 4 images.

# TT SMART VISION

Red Light Enforcement



TT SMART VISION CO., LTD.

## System Properties (Software)

- The system can detect the violation of traffic lights.
- Three-car detection system working at the same time
- The system can track the movement of vehicles.
- The system can classify vehicles.
- The system can calculate the speed of the vehicle from the motion in the image over two detection line
- Supports SQL, MySQL, Oracle databases.
- The system can be export to excel or pdf, providing the interface to sent out notification through http command.

## There are two types of cameras used.

- 1.Camera for car license plate depend on the junction, one LPR camera can detect 1-2 lanes depend on the detail of the license plate required. (Number of cameras requirement depends on the number of lanes to be detected.)
- 2.Camera for analysis of traffic light (Overview) resolution not less than 3MP with low-light performance.

### Camera Specification

- Overview camera required High resolution Network Camera in case of a camera resolution of not less than 3MP.
- In case of a LPR license plate, the lens size is about 12-40 mm or 8-50 mm.
- Low pass filter technology for bright lighting (Headlights) to get a clear picture.
- Infrared For night vision
- The camera supports IP66-rated base when used outdoors.

## Installer

- Camera for Traffic Signal Analysis (Overview) and Housing
- In case of a LPR license plate, the lens can be 12-40mm or 8-50mm
- Infrared (low light and night view)

# TT SMART VISION

Red Light Enforcement

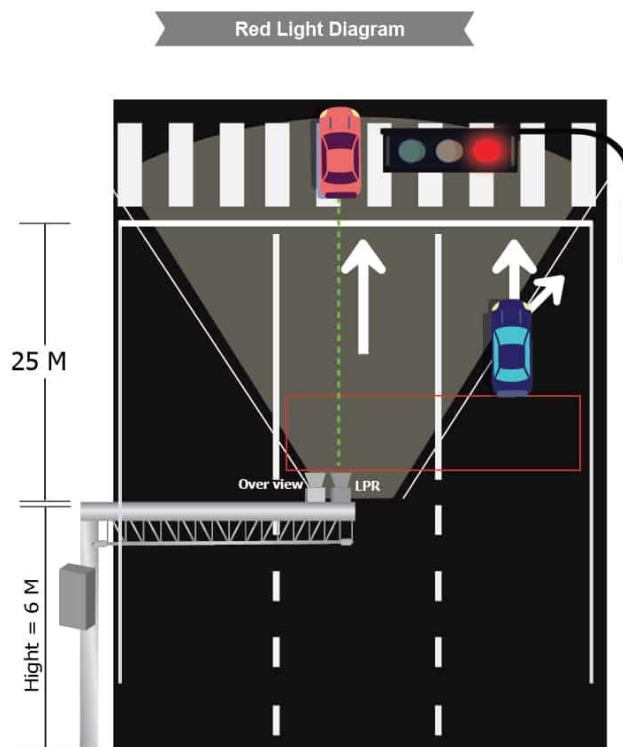


TT SMART VISION CO., LTD.

## PC Specification

- CPU Processor Corei7 Gen6 Speed 2.6GHz, 8GB RAM, 1 TB HDD
- Windows 7 professional or better or Windows 10 professional or better
- Webserver Kit (for central administration)

## Red Light Enforcement Diagram



ติดต่อเรา : โทร. 062-365-6463

บริษัท ทีที สมารท์ วิชั่น จำกัด : 519/13 หมู่บ้านนาราสรี โทเวย์รี่ ถนนนวมินทร์ แขวงคลองจั่น เขตบึงกุ่ม กรุงเทพฯ 10240

